

Annual Summer Bead Retreat 2017- Workshop details

Should I buy a kit for a workshop if available from the tutor?

It is important to ensure you **DO** have the correct list of requirements and all tools as per the tutor's materials list, which is always supplied ahead of the class.

If you do not have the correct supplies it impacts on the tutor's ability to teach and possibly other students in the class. Please be considerate and come well prepared. The time may be wasted with indecision over choosing colours or bringing incorrect supplies can be frustrating, a waste of money and loss of valuable class time for all.

Tutors spend a lot of time creating their patterns and putting kits together, so they know from experience which supplies work best for their specific project. This means you will achieve the desired result easily. Individual variations can then be made later as your confidence and skill level grows.

NOTE: In each of your **final** workshop confirmation email you will have a link to click on to download the **requirements list** and the **tutor's contact details**.

- Make sure you scroll down your confirmation email to the **Additional Information** section for this.

FRIDAY 19TH JANUARY 2017

9.00am – 12.00pm



Tapestry in 3D

Part 1 - Lorene Wilson
(Part 2 is Saturday am
21/1/2017)

Level:
Intermediate/Advanced
Kit: \$40
List supplied

Combine a variety of Czech beads, two-hole crescents, lentils, with seed beads to capture the central dome bead in this richly textured pendant.

Note: Both half day sessions must be booked if registering for this workshop. Different components will be covered in each session.



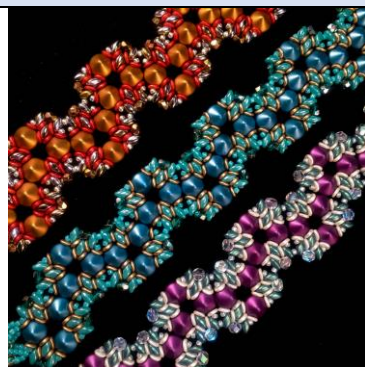
Tri Leaf Peyote Earrings

Kerrie Putnins

Level: Beginner /Intermediate
Kit: N/A
List supplied

Originally designed as an adjunct to Linda Richmond's fish pendant, these charming dangle earrings dance and swing with movement. Extend your knowledge of Peyote stitch with this diagonal variation. A good working knowledge of Peyote stitch is compulsory.

1.30pm – 4.30pm



Pohori

Joanne Ivy

Level: Beginner
Kit only: \$25.00
Pre-order from tutor
Payable on the day

"Pohori" – Czech for Mountain Range. Create a beautiful bracelet using two-hole Tipp beads, Superduos, Fire polished rounds and O beads. Build the components and join them together.



In Silhouette

Kay Lancashire

Level: Intermediate
Kit only: \$15 – Copper or brass
\$25.00 – Sterling Silver
Payable on the day

Using a simple drawing as a basis, class members will drill and pierce saw their chosen design onto thick metal and finish with a low temp soldered (no flame) premade bezel and cabochon if they choose. You may opt to finish the piece with fine chain, beads and wrapped loops. Basic sawing skills required and the ability to sand, file metal, and use pliers etc.

SATURDAY 20TH JANUARY 2017

9.00AM – 12.00PM



**Tapestry in 3D
Part 2**

Lorene Wilson

Level:
Intermediate/Advanced

Build on your knowledge of right angle weave to create a multi-purpose embellished chain and toggle for this challenging pendant.

In this second session students will create new components to complete the necklace.

**It's a Wrap
Quick 'N Easy PMC**

Lara Le Reveur

Level: All levels
Kit Only: \$5 Sanding kit
+
\$35 –10 gms PMC
\$58 – 16 gms PMC
All tools provided
See website details



Explore the magic of PMC3 to make small to medium tube beads in this class. These techniques can also be adapted to make end caps or focal pieces to suit other jewellery as well.

1.30pm – 4.30pm



**Let's Cab It –
Setting stones in
Silver clay**

Lara Le Reveur
(3 ½ hour workshop)

1.30 pm -5.00 pm

Workshop Fee: \$35

Level: All levels
Kit Only:
\$35 –10 gms PMC
\$58 – 16 gms PMC

All tools provided (Additional fee \$5 - \$10 for sanding kit)
See website details
Stone setting in pre-formed bezels will be covered in this Precious Metal Clay class, covering selection of stones and problems that you may encounter. This class is suited to either the absolute beginner, or the more experienced Clayer who would like to extend themselves.



**Grandma
Hugs Chain**

Pamela Felling

Level: Beginner
Kit: N/A
List provided

Learn anew or revisit a classic stitch. Feel like you are getting a hug from your Grandma, every time you wear your finished piece.

Techniques: Daisy Chain stitch

SUNDAY 22nd JANUARY 2017

9.00am – 12.00pm

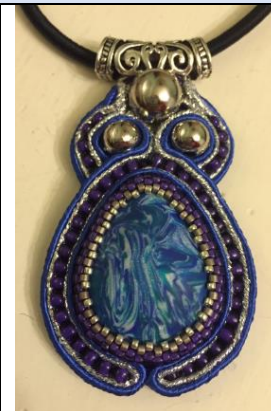


Leafy Embrace

Margaret Mueller

Level:
Beginner/Intermediate
Kit only: \$25
Payable on the day

Create a textured copper cuff with a riveted leaf motif while learning saw piercing, riveting and finishing techniques.



Soutache Pendant

Catriona Starpins

Level: Beginner/Intermediate
Kit only: \$25

Capture a pear shaped cabochon with a Peyote stitched bezel, embellishing the design with beads and swirls of Soutache braids.

Techniques: Soutache, Peyote Stitch and bead embroidery